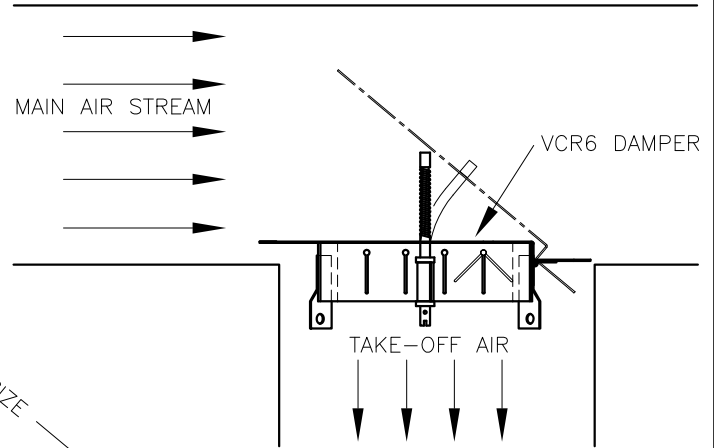
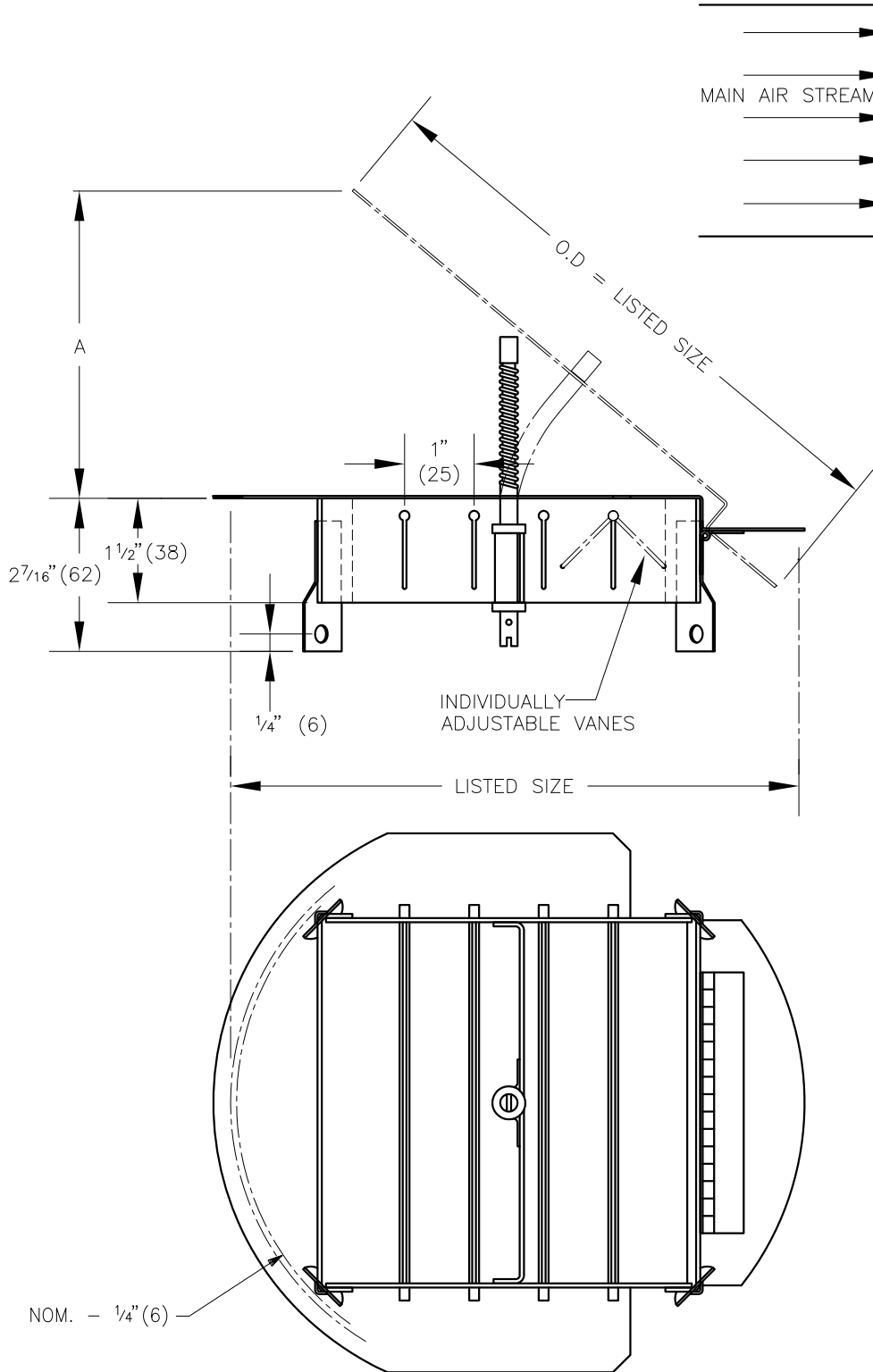


VCR6 COMBINATION DAMPER & GRID



APPLICATION DESCRIPTION

FINISH:

- B17 BLACK

MATERIAL:

- FRAME & DAMPER – STEEL
- VANES – EXTRUDED ALUMINUM

NOTES:

- SIZES 4" (102) THROUGH 12" (305), c/w FLEX CABLE CONTROLLER.
- SIZES 14" (356) THROUGH 36" (914) c/w THREADED ROD & SWIVEL NUT CONTROLLER.
- BLADE OPENS UP DIRECTLY INTO AIR STREAM PERMITTING PRECISION AIR VOLUME CONTROL. INSTALLS FLUSH WITH DUCT TAKE-OFF.
- SQUARE GRID AS SHOWN FOR SIZES UP TO 10" (254). T-SHAPE GRID FOR SIZES 12" (305) AND UP.
- FACTORY TOLERANCE: $\pm 1/32"$ (1)

LISTED SIZE	A
4" (102)	2 1/4" (57)
5" (127)	2 13/16" (71)
6" (152)	3 3/8" (86)
7" (178)	3 15/16" (100)
8" (203)	4 7/16" (113)
10" (254)	5 9/16" (141)
12" (305)	7 1/8" (181)
14" (356)	8 5/8" (219)
15" (381)	9" (229)
16" (406)	9 7/8" (251)
18" (457)	11" (279)
20" (508)	12 1/4" (311)
24" (610)	14 13/16" (376)
30" (762)	17 1/2" (445)
36" (914)	21 3/4" (553)

ALL METRIC DIMENSIONS () ARE SOFT CONVERTED. IMPERIAL DIMENSIONS ARE CONVERTED TO METRIC AND ROUNDED TO THE NEAREST MILLIMETER.

PROJECT:		PRICE [®]	
ENGINEER:		<i>RV</i>	VCR6
CUSTOMER:			
SUBMITTAL DATE:		COMBINATION DAMPER & GRID	
SPEC. SYMBOL:			